

# D-Ended Sight Glass Fittings PN 10

# Type KL 631

**Pressure rating:**

10 bar  
higher pressures on request

**Base frame:**

1.4404 / 1.4571 / 1.4435 / 1.4462 / ST37 / H2  
on demand with APZ DIN EN 10204-3.1  
Flange thickness: 25mm

**Top frame:**

1.4301 / 1.4404 / ST37 / H2  
Flange thickness: 15mm

**Bolts:**

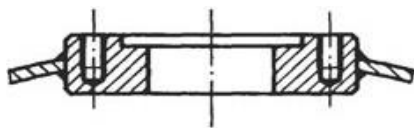
DIN 912 A2-70 or A4-70

**Sight glass:**

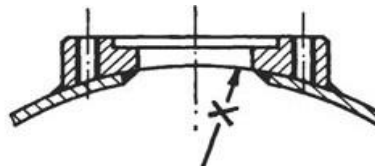
Soda-lime-silicate glass DIN 8903 (up to 100°C)  
Borosilicate glass DIN 7081 (up to 243°C)

**Seals (FDA compliant):**

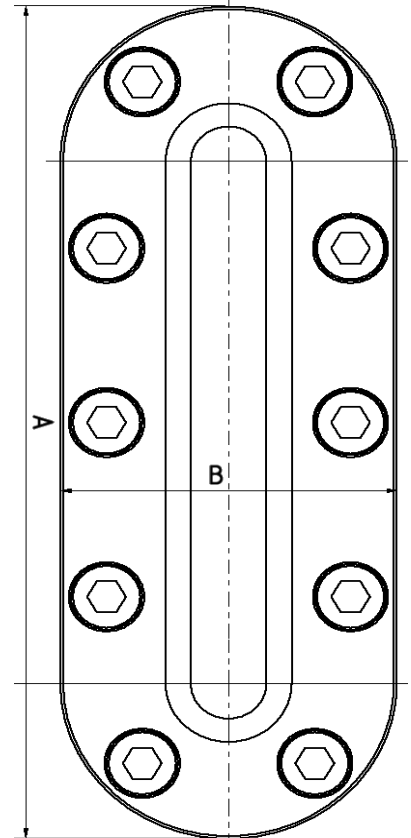
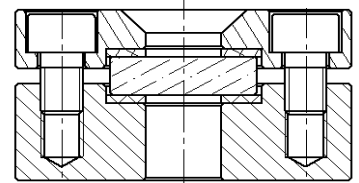
EPDM, Reinz AFM 34, PTFE  
others on request



Version with blind tapplings



or with cylindrical pad shape



**Ordering exemple:**

5 D-Ended Sight Glass Fittings type KL 631 Size 5 with radius R = 307mm  
Base frame: 1.4404  
Top frame: 1.4301  
Borosilicate glass, Gaskets: EPDM

Size	Mounting Size (mm)		View (mm)		No. Of M10 Bolts	Glass Dimensions
	A	B	height	width		
0A	170	80	108	18	8	35/10 x 125
0B	215	80	153	18	10	35/10 x 170
1	260	80	198	18	12	35/10 x 215
2	305	80	243	18	14	35/10 x 260
3	350	80	288	18	16	35/10 x 305
4	395	80	333	18	18	35/10 x 350
5	440	80	378	18	20	35/10 x 395
6	485	80	423	18	22	35/10 x 440
8	575	80	513	18	26	35/10 x 530

**Remark:**

Please check the seal area of the base flange after welding; adjust it if uneven.



mail@sightflow.com.au  
Tel: 1800 539220